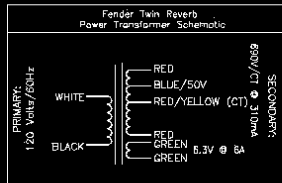


FENDER "TWIN REVERB-AMP 100W RMS" LAYOUT NOTICE

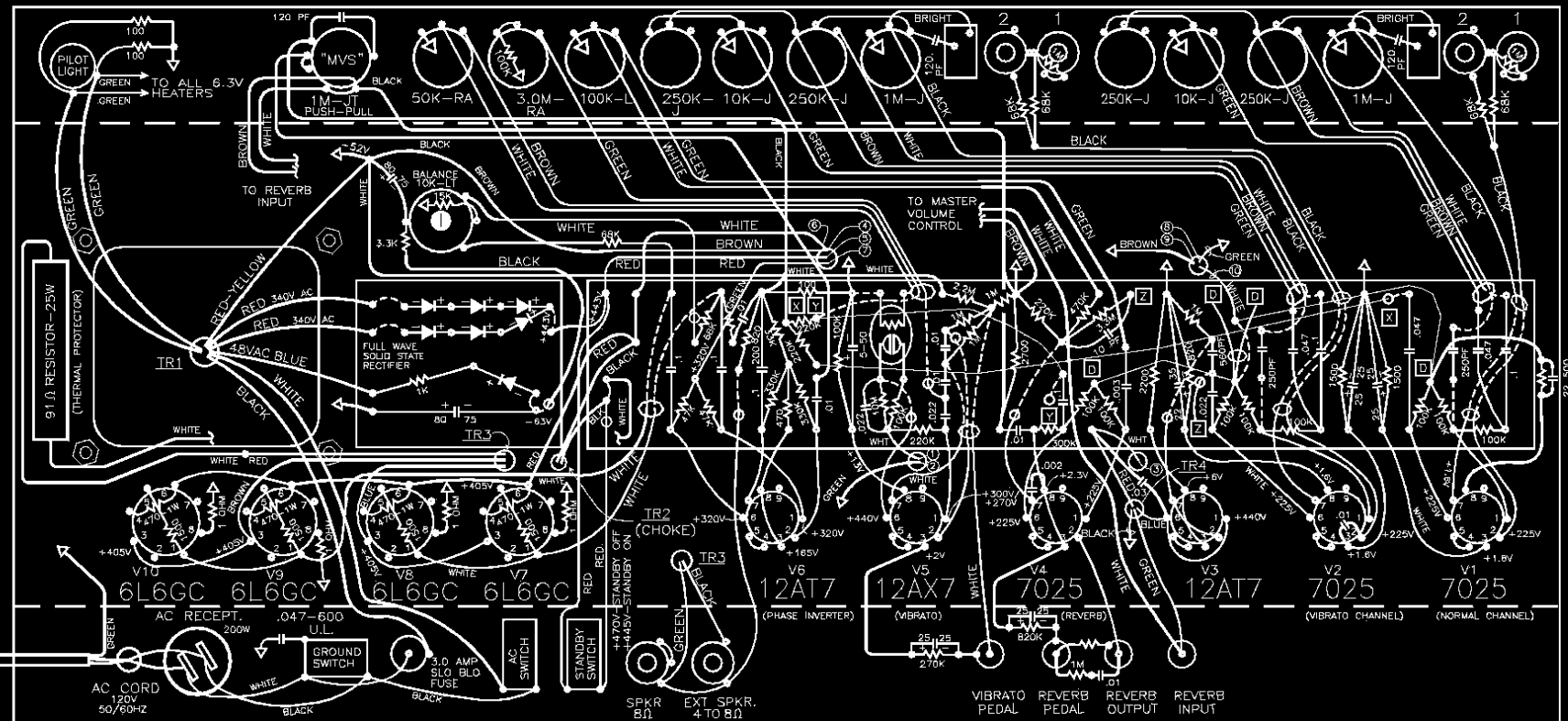
MODEL WITH REVERB AND VIBRATO

VOLTAGES READ TO GROUND WITH V.T.V.M. WITH VIBRATO GROUNDING (EXCEPT V5) - NO INPUT SIGNAL

MASTER VOLUME INTENSITY SPEED REVERB BASS MIDDLE TREBLE VOLUME VIBRATO BASS MIDDLE TREBLE VOLUME NORMAL

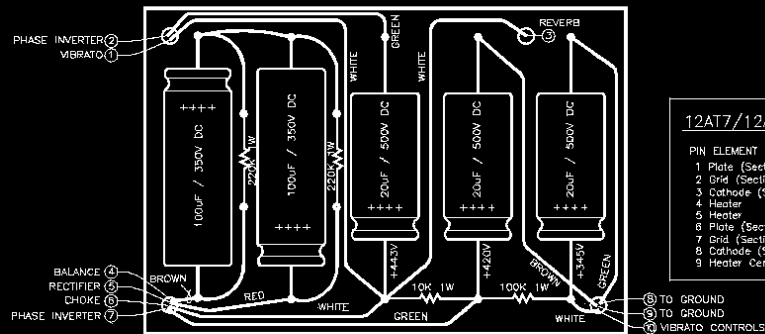


TR1 POWER TRANSFORMER
TR2 CHOKE
TR3 OUTPUT TRANSFORMER
TR4 REVERB TRANSFORMER



NOTE: ALL RESISTORS 1/2 WATT 10% TOLERANCE, IF NOT SPECIFIED.

NOTES: 1. ALL CAPACITORS AT LEAST 400 VOLT RATING, IF NOT SPECIFIED.
2. MASTER VOLUME PUSH-PULL SWITCH INDICATED AS "MVS". PUSH IN FOR PURE SOUND.



FILTER CAPACITOR LAYOUT

FENDER MUSICAL INSTRUMENTS
CBS MUSICAL INSTRUMENTS
A DIVISION OF COLUMBIA BROADCASTING SYSTEMS INC.
FULLERTON, CALIFORNIA
U.S.A.

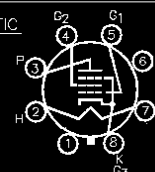
12AT7/12AX7 SCHEMATIC

- PIN ELEMENT
- 1 Plate (Section 2)
 - 2 Grid (Section 2)
 - 3 Cathode (Section 2)
 - Heater
 - Heater
 - Plate (Section 1)
 - Grid (Section 1)
 - Cathode (Section 1)
 - Heater Center-Tap



6L6GC SCHEMATIC

- PIN ELEMENT
- NONE
 - HEATER (FILAMENT)
 - PLATE (ANODE)
 - SCREEN GRID
 - CONTROL GRID
 - NONE
 - HEATER (FILAMENT)
 - CATHODE



THIS PRODUCT MANUFACTURED UNDER ONE OR MORE OF THE FOLLOWING U.S. PATENTS #2817706, #2973681, #192859 AND PATENTS PENDING.

MASTER VOLUME CONTROL WAS ADDED IN NOVEMBER 1972 AS REV. "F". THIS DRAWING BASED ON AS-BUILT OF 1974 EXAMPLE. ALL VALUES GIVEN ARE TAKEN FROM 100W MASTER VOLUME SCHEMATIC.

Fender® MUSICAL INSTRUMENTS
SANTA ANA, CALIFORNIA

DWG. TITLE SCHEMATIC WIRING
DIAGRAM - TWIN REVERB,
TUBE TYPE

DWN.	F.T.	DATE
CHK.		DATE
APPD.		DATE
APPD.		DATE
		DATE

APPROVAL -

APPROVAL -

REL. NO.	SIZE	DWG. NO.	REV.
D		045377	E
SCALE	NONE	MODEL TWIN REVERB AMP	SHEET 2 OF 2

REV.	DESCRIPTION	DATE
E	INC. ECO 2750 & ECO2053	1-30-70
D	INCORPORATED ECO 1687	10-16-68
C	INCORPORATED ECO 1069	5-29-69